

END PLATE HEIGHT 70 MM

Stairtreads are manufactured from either Press Locked or Press Welded grating. They are supplied with welded-on end plates which are pre-drilled for fixing to stair stringers.

Generally, the demands made on stairtreads in terms of anti-slip capability are higher than on gratings. Which is why MEISER treads are produced with a perforated safety nosing. This is not only safer for the people using the stairs; it also contributes generally to a more stable structure.

Press locked industrial stairtreads

with endplates and safety nosing
Mesh width 30 x 30 mm

Length (TS) (mm)	Width (FS) (mm)	Bearing bar (mm)	Hole centre	Gross price EUR
600	240	30 x 2	120	16,34
600	270	30 x 2	150	17,16
700	240	30 x 2	120	18,03
700	270	30 x 2	150	18,78
800	240	30 x 2	120	19,51
800	270	30 x 2	150	20,84
900	240	35 x 2	120	21,68
900	270	35 x 2	150	22,87
1000	240	35 x 2	120	23,02
1000	270	35 x 2	150	24,54
600	240	30 x 3	120	19,96
600	270	30 x 3	150	20,71
700	240	30 x 3	120	20,35
700	270	30 x 3	150	21,99
800	240	30 x 3	120	22,38
800	270	30 x 3	150	24,17
800	305	30 x 3	180	26,07
900	240	30 x 3	120	25,03
900	270	30 x 3	150	26,37
900	305	30 x 3	180	28,42
1000	240	30 x 3	120	26,65
1000	270	30 x 3	150	27,79
1000	305	30 x 3	180	30,11
1000	270	40 x 3	150	33,61
1000	305	40 x 3	180	36,11
1100	270	40 x 3	150	35,99
1100	305	40 x 3	180	38,88
1200	270	40 x 3	150	38,44
1200	305	40 x 3	180	41,63
1250	270	40 x 3	150	39,16
1250	305	40 x 3	180	44,71

Press locked industrial stairtreads

with endplates and safety nosing
Mesh width 30 x 19 mm

Length (TS) (mm)	Width (FS) (mm)	Bearing bar (mm)	Hole centre	Gross price EUR
600	240	30 x 2	120	19,93
700	240	30 x 2	120	21,99
700	270	30 x 2	150	22,89
800	240	30 x 2	120	23,78
800	270	30 x 2	150	25,44
900	270	35 x 2	150	27,92
1000	240	35 x 2	120	28,09
1000	270	35 x 2	150	29,94

Press locked industrial stairtreads

with endplates and safety nosing
Mesh width 30 x 10 mm

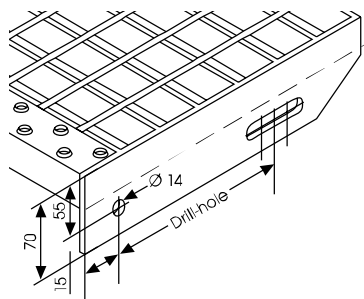
Length (TS) (mm)	Width (FS) (mm)	Bearing bar (mm)	Hole centre	Gross price EUR
600	270	30 x 2	150	25,74
700	270	30 x 2	150	28,21
800	270	30 x 2	150	31,25
900	270	35 x 2	150	34,33
1000	270	35 x 2	150	36,80
1000	305	30 x 3	180	44,31
1100	270	40 x 3	150	51,55
1200	270	40 x 3	150	54,48
1100	305	40 x 3	180	56,59
1200	305	40 x 3	180	60,80
1250	270	40 x 3	150	55,50
1250	305	40 x 3	180	61,93

Press locked industrial stairtreads stainless steel V2A, 1.4301, pickled

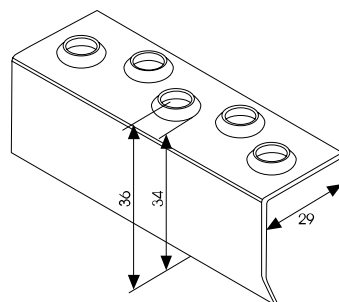
with endplate and safety nosing
Mesh width 30 x 30 mm

Length (TS) (mm)	Width (FS) (mm)	Bearing bar (mm)	Hole centre	Gross price EUR
600	270	30 x 2	150	80,72
800	270	30 x 2	150	90,81
1000	270	30 x 3	150	118,59
1200	270	40 x 3	150	171,59





END PLATE



SAFETY NOSING

Loose End Plates

Self Colour, ungalvanized		
Length (mm)	Hole centre	Gross price EUR
240	120	2,03
270	150	2,03
305	180	2,03

Press locked industrial anti-skid stairtreads stainless steel V2A, 1.4301, pickled

with notched bearing and cross bars endplates and safety nosing
Mesh width 30 x 30 mm

Length (TS) (mm)	Width (FS) (mm)	Bearing bar (mm)	Hole centre	Gross price EUR
600	270	30 x 2	150	92,82
800	270	30 x 2	150	104,43
1000	270	30 x 3	150	136,38
1200	270	40 x 3	150	197,36

Safety nosing

Loose End Plates, ungalvanized	
Length (mm)	Gross price EUR
600	3,26
700	3,78
800	4,33
900	4,89
1000	5,40
1100	5,95
1200	6,50
3000	13,80
6000	24,36

Press locked industrial anti-skid stairtreads

with notched bearing and cross bars endplates and safety nosing
Mesh width 30 x 30 mm

Length (TS) (mm)	Width (FS) (mm)	Bearing bar (mm)	Hole centre	Gross price EUR
600	270	30 x 2	150	19,78
700	270	30 x 2	150	21,60
800	270	30 x 2	150	23,97
900	270	35 x 2	150	26,30
1000	270	35 x 2	150	28,23
600	270	30 x 3	150	23,82
800	270	30 x 3	150	27,81
1000	270	30 x 3	150	31,95
1200	270	40 x 3	150	44,21
1200	305	40 x 3	180	47,90
1250	270	40 x 3	150	45,02
1250	305	40 x 3	180	51,43

Press welded industrial stairtreads

with twisted square bars endplate and safety nosing
Mesh width 30 x 30 mm

Length (TS) (mm)	Width (FS) (mm)	Bearing bar (mm)	Hole centre	Gross price EUR
600	240	30 x 2	120	16,34
600	270	30 x 2	150	17,16
700	240	30 x 2	120	18,03
700	270	30 x 2	150	18,78
800	240	30 x 2	120	19,51
800	270	30 x 2	150	20,84
900	240	35 x 2	120	21,68
900	270	35 x 2	150	22,87
1000	240	35 x 2	120	23,02
1000	270	35 x 2	150	24,54
600	240	30 x 3	120	19,96
600	270	30 x 3	150	20,71
700	240	30 x 3	120	20,35
700	270	30 x 3	150	21,99
800	240	30 x 3	120	22,38
800	270	30 x 3	150	24,17
800	305	30 x 3	180	26,07
900	240	30 x 3	120	25,03
900	270	30 x 3	150	26,37
900	305	30 x 3	180	28,42
1000	240	30 x 3	120	26,65
1000	270	30 x 3	150	27,79
1000	305	30 x 3	180	30,11
1000	270	40 x 3	150	33,61
1000	305	40 x 3	180	36,11
1100	270	40 x 3	150	35,99
1100	305	40 x 3	180	38,88
1200	270	40 x 3	150	38,44
1200	305	40 x 3	180	41,63
1250	270	40 x 3	150	39,16
1250	305	40 x 3	180	44,71



Standard stair gratings

with welded and drilled end plates
hot-dip galvanised and notched cross bars - R11
Mesh width 31x31 mm

Dimension (mm)	Bearing bar (mm)	Drill hole c/c	Gross price EUR
500 x 200	25/2	116	13,74
600 x 200	25/2	116	15,46
700 x 200	25/2	116	17,06
800 x 200	30/2	116	18,45
800 x 250	30/2	116	21,29
900 x 200	35/2	116	20,51
1000 x 200	35/2	116	21,79
1000 x 250	35/2	116	25,06
1200 x 250	40/3	116	39,26

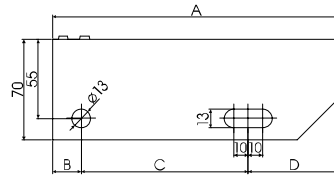


PLATE WITH SPECIAL BORE

A	B	C
200	20	116
250	20	116

with DIN c/c drilling and design, hot-dip galvanised
with notched cross bars -R11,
mesh width 30 x 10 mm, bearing bars 2 or 3 mm

Dimension (mm)	Bearing bar (mm)	Drill hole c/c	Gross price EUR
600 x 240	30/2	120	24,59
700 x 240	30/2	120	26,96
800 x 240	30/2	120	29,86
800 x 270	30/2	150	33,59
800 x 305	30/2	180	37,95
900 x 270	35/2	120	36,91
900 x 305	35/2	180	41,70
1000 x 270	35/2	150	39,50
1000 x 305	35/2	180	44,69
1200 x 270	40/3	150	58,57
1200 x 305	40/3	180	65,36
1500 x 305	50/3	180	91,89

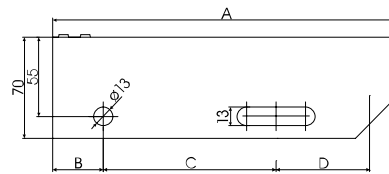


PLATE WITH DIN BORE, BEARING BAR HEIGHT UP TO 40 MM

with DIN c/c drilling, hot-dip galvanised with notched
crossbars -R10, mesh width 30 x 30 mm,
bearing bars 2 or 3 mm

Dimension (mm)	Bearing bar (mm)	Drill hole c/c	Gross price EUR
600 x 240	25/2	120	17,58
600 x 270	25/2	150	18,45
600 x 305	25/2	180	20,84
700 x 240	25/2	120	19,39
700 x 270	25/2	150	20,18
700 x 305	25/2	180	22,81
800 x 240	30/2	120	20,96
800 x 270	30/2	150	22,41
800 x 305	30/2	180	25,30
900 x 240	35/2	120	23,31
900 x 270	35/2	150	24,59
900 x 305	35/2	180	27,78
1000 x 240	35/2	120	24,75
1000 x 270	35/2	150	26,39
1000 x 305	35/2	180	29,79
1200 x 240	40/3	120	36,73
1200 x 270	40/3	150	41,33
1200 x 305	40/3	180	46,67
1500 x 305	50/3	180	80,28

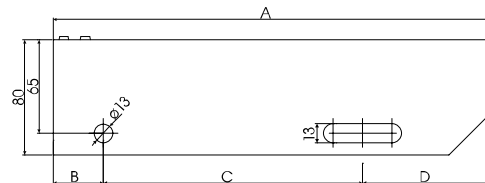


PLATE FOR BEARING BAR HEIGHT 50 MM

A	B	C
240	35	120
270	35	150
305	35	180

